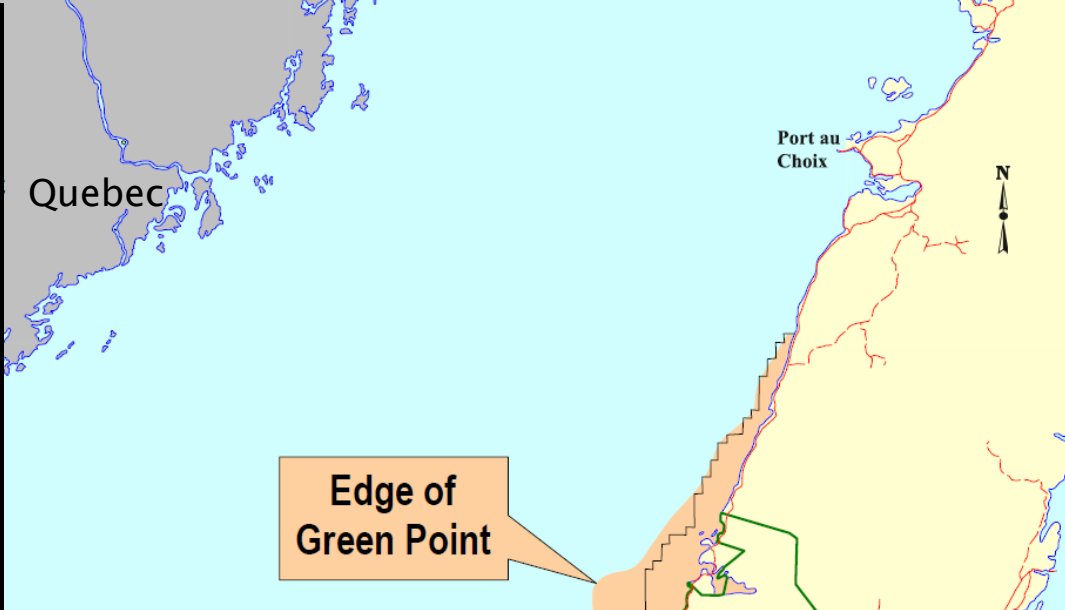
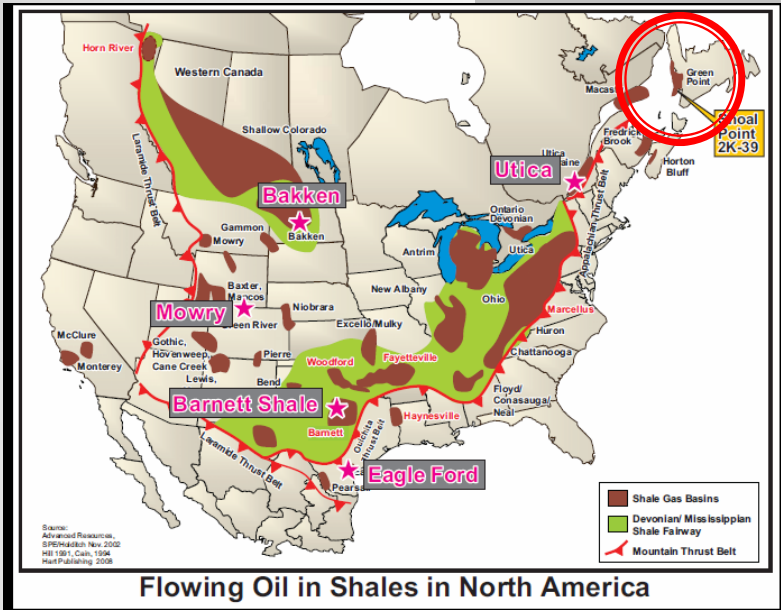




Oil-in-Shale Newfoundland

Over 700,000 acres of the Green Point Shale

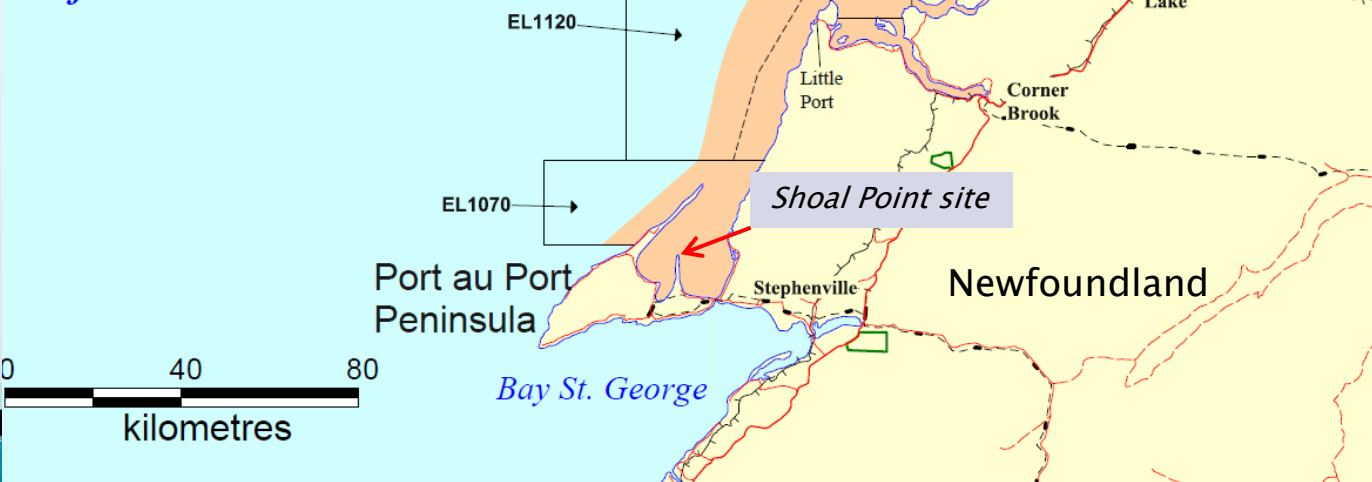
14 February 2012



**Gross Green Point Acreage:
Approx. 720,000 acres
net to SPE: 98%**

Gulf or St. Lawrence

Properties can be drilled from shore into shallow water, Western Newfoundland



A World Class Oil Shale Deposit

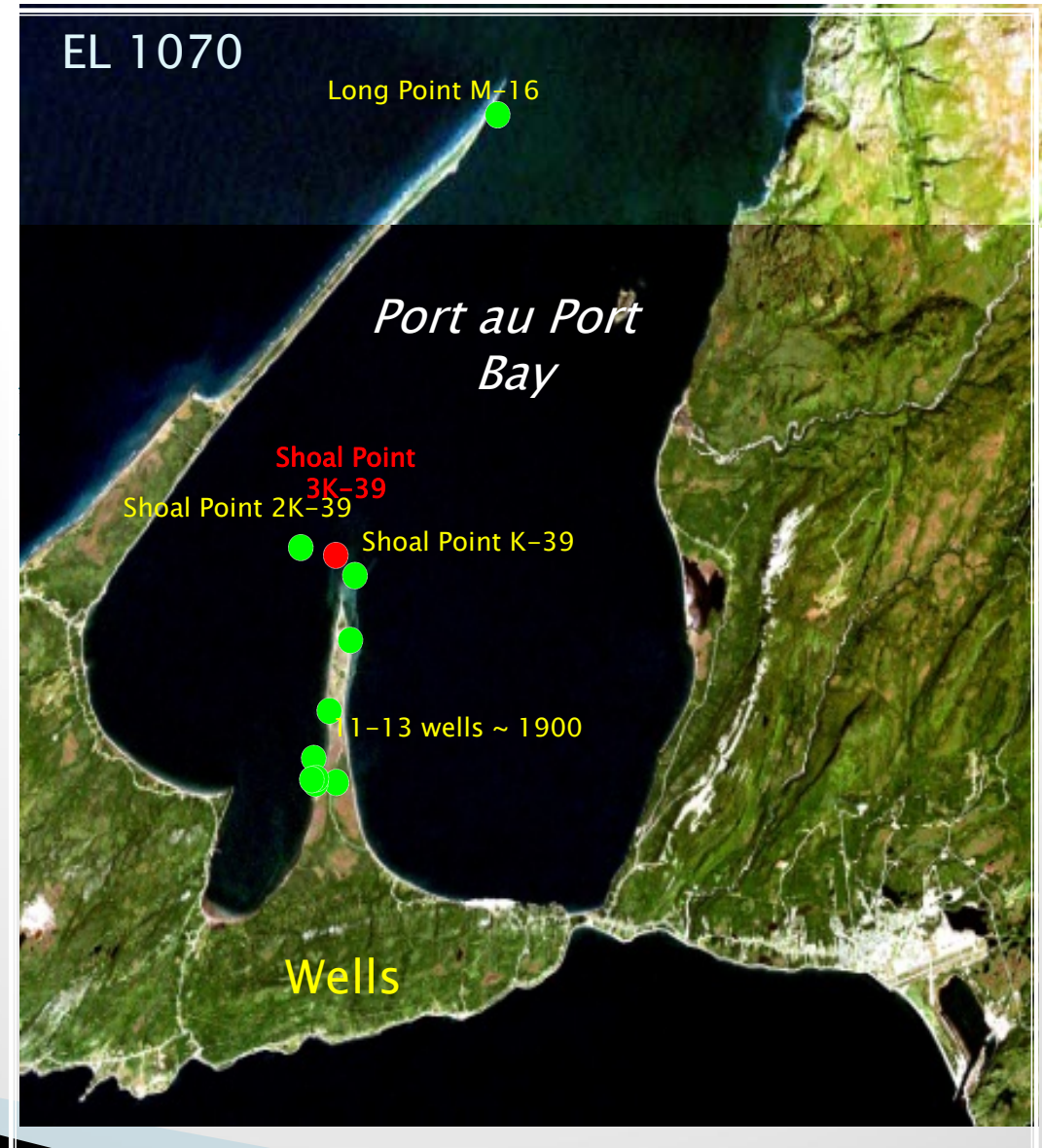
- ▶ SPE operates approx. 720,000 gross acres (707,000 net) near offshore western Newfoundland
- ▶ Green Point Shale enhanced by silt interbeds and natural fractures
- ▶ Gross interval over 2000 metres thick, due to thrusting and repetition
- ▶ Shallow, drillable from onshore
- ▶ OOIP 100+bn barrels, calculated from volumetrics

Green Point Shale – A proven oil system

- ▶ Green Point Shales in outcrop show high Total Organic Carbon
- ▶ Numerous oil seeps
- ▶ Historical small scale production from 1850's to 1965
- ▶ 4 modern wells all penetrated shales & had oil shows
- ▶ Modern well log interpretation by NuTech Energy Alliance identified almost 900 metres of pay

Historical wells

4 modern wells +
13 historical wells
(1800's to 1965),
in and around Shoal Point,
Port au Port Bay,
Western Newfoundland



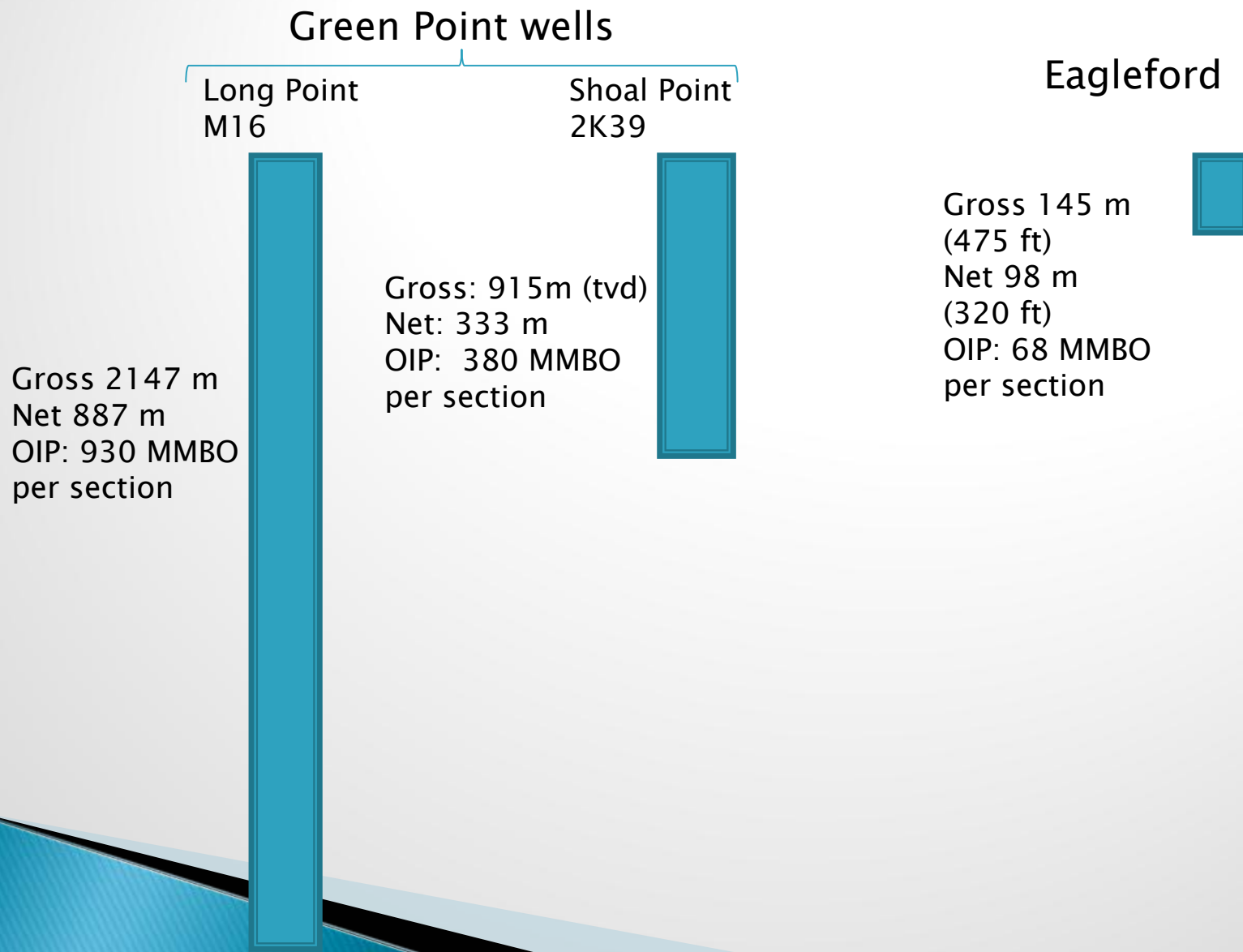
Profile of **NuTech** ENERGY ALLIANCE

7702 FM 1960 East - Suite #300 - Humble, TX 77346
(281) 812-4030 - (281) 812-4027

- ▶ Industry leaders in analysis of shale resources
- ▶ Proprietary technology applied to existing well logs
- ▶ 2500+ wells evaluated for shale in all major North American basins
- ▶ Identified and quantified bypassed or overlooked hydrocarbons in 45,000 wells worldwide
- ▶ Quantifies mineralogy, pore fluid volumes, TOC and gas volumes
- ▶ Fracture analysis complements matrix pay analysis

Green Point to Eagleford comparison

Based on NuTech analysis



Green Point wells

Long Point
M16

Shoal Point
2K39

Gross 2147 m
Net 887 m
OIP: 930 MMBO
per section

Gross: 915m (tvd)
Net: 333 m
OIP: 380 MMBO
per section

Eagleford

Gross 145 m
(475 ft)
Net 98 m
(320 ft)
OIP: 68 MMBO
per section

Current Situation

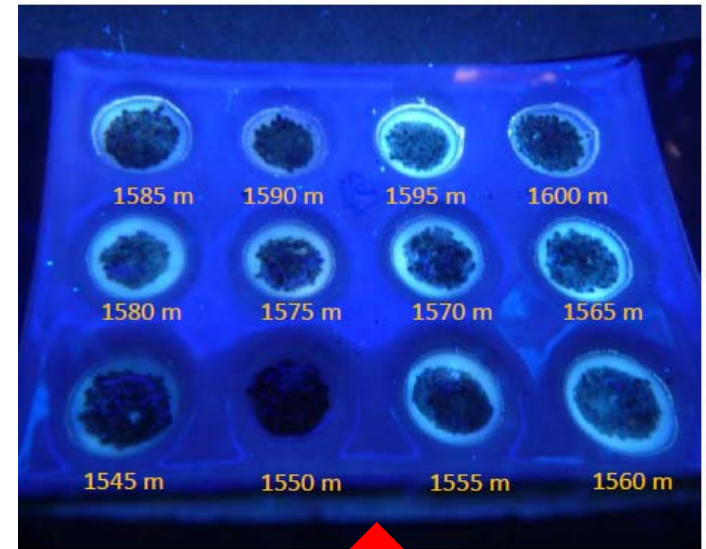
- ▶ First purpose designed appraisal well 3K39, drilled 2011
- ▶ Drilled to measured depth of 1745m, cased, awaiting completion and testing – February–March 2012
- ▶ 175 – 500 metres of pay from oil shows, petrophysics and gas chromatography (3K39)
- ▶ Extensive natural fracturing
- ▶ Closed Chamber Test demonstrates permeability and formation pressure of ~8800 kPa.
- ▶ 52 metres of core provides detailed rock analysis
- ▶ Farmed in on adjacent blocks, drill 2012

Joint Venture Lands

- ▶ Acquisition of adjacent lands by farmin, late 2011
- ▶ Gross acreage increase from 150,000 to 720,000 acres
- ▶ Net acreage position 707,000 acres or 98% net to gross
- ▶ Shoal Point now dominant Green Point player, entire offshore covered
- ▶ 100% operatorship on new JV lands
- ▶ 2-well program in 2012 will allow regional affirmation of the play
- ▶ Lead to full market evaluation for company

3K39 Rock Data

Light sweet, crude indicated from rock and log analysis over gross interval 450 -1745 metres



Cuttings in solvent show blue-white fluorescence indicating oil over 70-80% of well

Cores show drainage of oil to bottom of trays, suggesting enough permeability to respond to gravity

Strategy

- ▶ Complete & test 3K39
- ▶ Apply for Significant Discovery License – June 2012
- ▶ AJM Deloitte to compile resource report – February 2012
- ▶ Upgrade listing to TSX – March 2012
- ▶ Plan well programs on adjoining EL 1120 and EL 1079R
- ▶ Negotiate partnerships

Management

George Langdon, PhD., PGeol., President
R. Brian Murray, MBA, Chief Financial Officer
Russell Compton, Senior Operations Manager

Board of Directors

Norman Davidson Kelly, Chairman
Don Sheldon
R. Brian Murray
Howard Hannick
John Clarke

Consultants

John (Jock) McCracken, PGeol., Egret Consulting Ltd.
NuTech Energy Alliance, Houston
Dragon Lance Management, Alberta
Alex Falconer, CA

Investor Relations

David Black
Gary Anstey

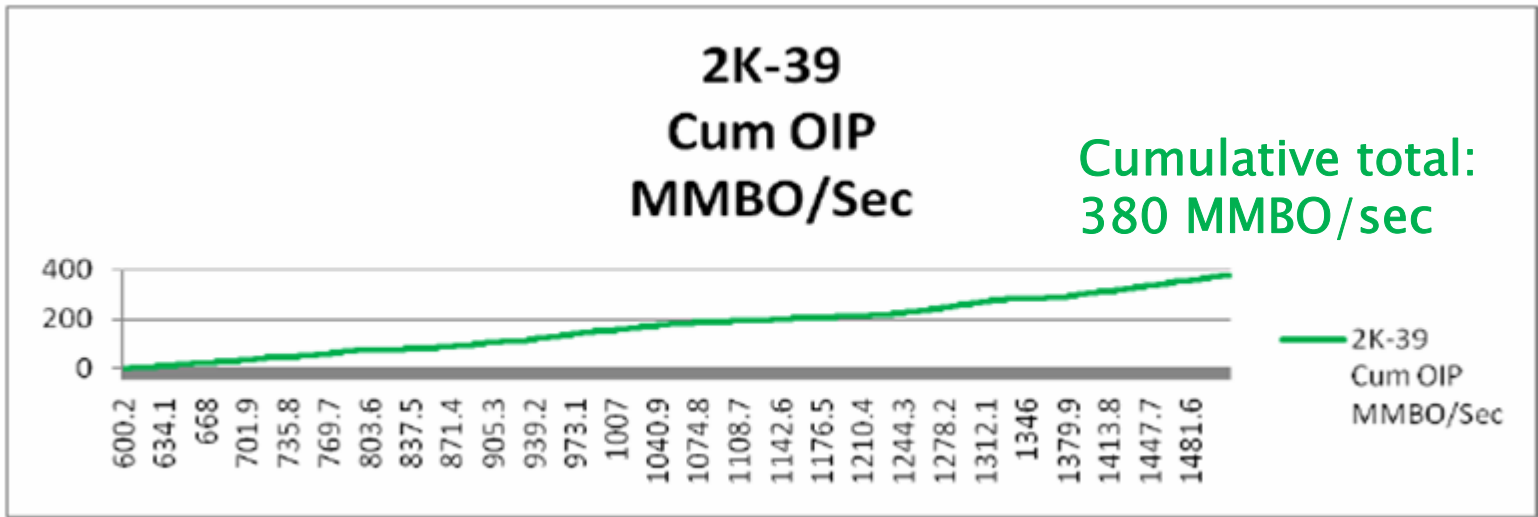
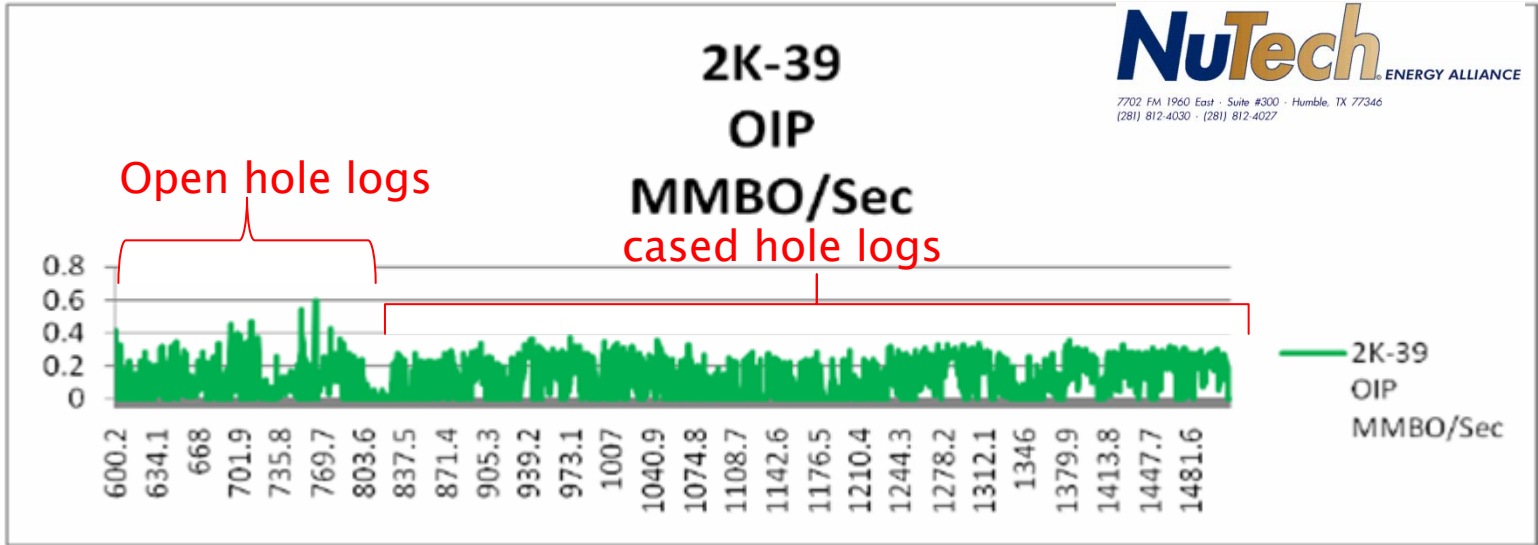
Investment highlights

- Very large estimate of Oil-in-Place because of extraordinarily thick pay zones that extend over a large area – 100 billion barrels +
- Large land position with 3 exploration licenses – 720,000 gross acres in total
- Operatorship and large Working Interest in each license – minimum 80% W.I.
- Potential to be a combined conventional (i.e., no stimulation required) and oil-in-shale (resource) play – rel. high porosity and permeability, plus evidence of flow capability, encountered with drilling to date
- Good local infrastructure (e.g., roads, brownsite and nearby deepwater port already in place)
- Supportive governing jurisdiction for oil and gas exploration and development
- Oil recovered expected to be high quality – light and sweet (40 – 50° API)

Disclaimer

- Certain statements herein may constitute forward-looking statements related to future events or our future performance. These statements involve known or unknown risks, uncertainties and other factors that may cause actual results or events to differ materially from those anticipated in such forward-looking statements. No assurance can be given that actual results, performance or achievement expressed in, or implied by, these forward-looking statements will occur, or if they do, that any benefits may be derived from them.
- Our actual results may differ materially from those anticipated in these forward-looking statements as a result of factors that may include, but are not limited to: the impact of government regulation, potential delays or changes in plans with respect to exploration and development projects, success of exploration and development activities, general industry and market conditions, and other risks.

APPENDIX A: Storage capacity (OIP) in the Shoal Point 2K39 well

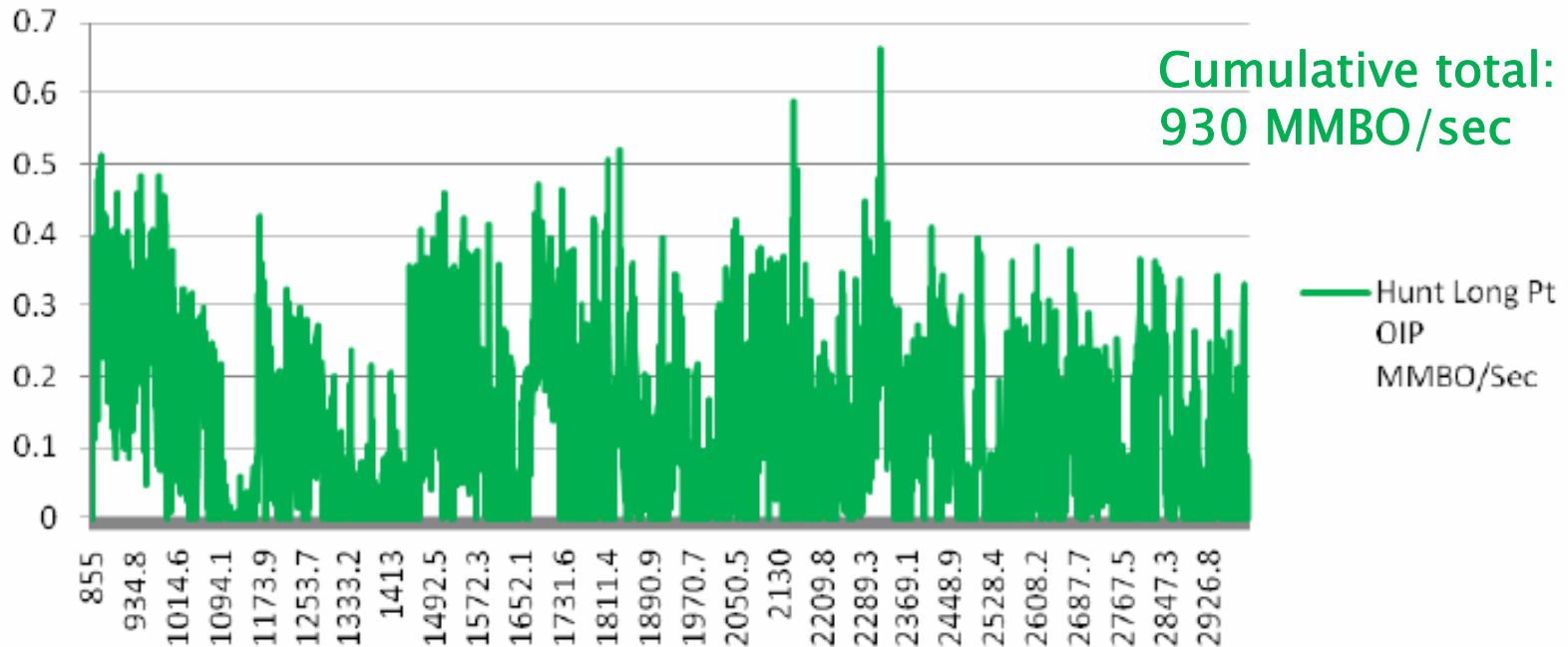


APPENDIX B: Storage capacity (OIP) in the Long Point M-16 well



Hunt Long Pt OIP MMBO/Sec

Cumulative total:
930 MMBO/sec

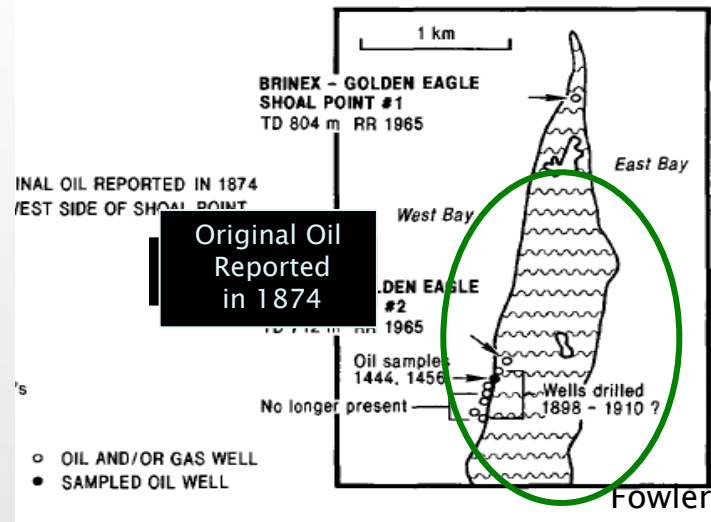


Appendix C: Green Point at Shoal Point – what did we know from historical data?

- ▶ Green Point Shales in outcrop show high Total Organic Carbon (TOC) and lie within the oil window of maturity
- ▶ Numerous oil seeps in the area
- ▶ Historical production at Shoal Point up to 20 BOPD
- ▶ 1 month production: 68 barrels ca. 1900
- ▶ Light oil 36 – 51 degree API in



From Fagan 2002



Fowler et al 95